



Request for Qualifications

Cutler Cay Community Development District District Engineer Qualifications

April 29, 2026

Proposal Number: 26001393P



Engineering
& Design



Table of Contents

3	Tab 1 Transmittal Letter	30	Tab 5 Client References
2	Tab 2 Firm Qualifications	35	Tab 6 Insurance
12	Tab 3 Personnel	38	Tab 7 Business Ethics
16	Tab 4 Standard Form 254 & 255	40	Tab 8 Additional Information



Tab 1

Transmittal Letter

7400 Corporate Center Dr, Ste C
Miami, FL 33126

April 29, 2026

Offices of the Cutler Cay Community Development District
Gloria Perez, District Manager, c/o Special District Services, Inc.
8785 SW 165th Avenue, Suite 200
Miami, Florida 33193

Ref: Response to Request for District Engineer Qualifications for the Cutler Cay CDD

Dear Ms. Perez:

Colliers Engineering & Design, Inc. (CED) appreciates the opportunity to submit our response to the Request for District Engineer Qualifications to the Cutler Cay Community Development District (District). We are very familiar and proficient with tasks that are outlined in the Request for Qualifications (RFQ) which includes, but not limited to, consulting engineering, civil engineering, surveying services, environmental services, and construction management, as well as other miscellaneous services. Our firm has been providing the exact services requested within RFQ for over 40 years in other municipalities and special purpose governmental entities. We have the expertise to successfully act as the Engineer for the District.

The firm's commitment to excellence, innovative thinking, and meticulous attention to detail are shared across all affiliated entities, creating a consistent standard of quality and client satisfaction. Our civil engineers, surveyors, environmental specialists, construction management engineers and inspectors, grant specialists, and planners provide viable and creative solutions to local municipal agencies to help meet diverse planning, infrastructure, and capital improvement goals while protecting functionality, natural resources, aesthetics, and quality of life. We strive to accelerate our clients success in every aspect.

CED differentiates itself through a fully integrated multidisciplinary firm capable of delivering civil engineering, surveying, environmental, geotechnical, traffic, transportation, and construction management services under one organization. This integrated model enhances responsiveness and ensures consistent quality. The firm's local presence within Miami-Dade County, combined with established relationships and familiarity with regional regulatory agencies, positions the team to provide efficient and proactive support to the District.

Eugene Collings-Bonfill, PE, PSM, will serve as District Engineer and will be the primary point of contact. Eugene has more than 28 years of experience in municipal engineering, infrastructure program delivery, and public sector leadership. Eugene's current experience with Community Development Districts has equipped him with the ability to provide the required services for this contract. As Senior Principal, I personally commit CED's priority effort to meet all District's requirements efficiently, effectively, and on schedule and within budget.

Thank you for your consideration and we look forward to working with you as a trusted partner. Should you have any questions, please feel free to contact Eugene Collings-Bonfill, PE, PSM, at 305.938.9074, or eugene.collingsbonfill@collierseng.com, or me, Paul Sterbenz, PE at paul.sterbenz@collierseng.com, 908.200.2812.

Sincerely,
Colliers Engineering & Design, Inc.



Paul M. Sterbenz, PE
Project Manager | Senior Principal



Engineering
& Design

The CED Benefit

- Providing engineering services for over 40 years, including serving as Municipal Engineers.
- We strive to accelerate our clients success through innovation and cost saving solutions.
- Multidiscipline firm that provides more than Engineering, allowing for expanded services and new technology on projects.
- This contract will be managed from our local office at 7400 Corporate Center Dr, Ste C, Miami, FL 33126. CED's local staff are certified to provide all of the professional services required for this contract.

Proposed District Engineer and First Point of Contact:
» Mr. Eugene Collings-Bonfill, PE, PSM
7400 Corporate Center Dr,
Ste C, Miami, FL 33126
P: 305.938.9074
E: eugene.collingsbonfill@collierseng.com



Tab 2

Firm Qualifications

Firm Qualifications

History of the Firm

Established in 1984, CED is a trusted provider of multi-discipline engineering, surveying, consulting, and design services delivering customized solutions to public and private clients. **CED is a corporation** with over 3,200 talented professionals nationwide to support the needs of our clients. In Florida, we have over 180+ managers and technical/support staff. **We have been successfully providing these services for over 40 years, including 13 years in Florida in which we have grown significantly as a result of our work quality and responsiveness.** Driven by our values of quality, accountability, and safety in the work environment, our dedicated professionals take pride in their commitment to providing clients the highest standards of customer service.

CED's officers/principals are listed below:

Officers/Principals	
Name	Title
Kevin Haney, PE	President/CEO
Richard Maser, PE	Executive Chairman
Leonardo Ponzio, PLS	Executive VP/CAO/ Treasurer
Joseph Dopico, PE	Vice President/COO
Allison Colantuoni, PHR, SHRM-CP	Vice President/CPO (Chief People Officer)
Brian Curtis, Esq.	Vice President/General Counsel/Corporate Secretary

Location

For your contract, we will provide resources from our Miami office, located at **7400 Corporate Center Dr, Ste C, Miami, FL 33126**, just a short drive from the District. Our office will be directly supporting this contract, leveraging our extensive local knowledge and experience with similar Districts and communities. Being in close proximity to the District allows for seamless communication and collaboration with stakeholders, ensuring swift responsiveness to any project needs. Our office is equipped with state-of-the-art technology and resources, ensuring efficient and accurate project completion.



Furthermore, we will also have access to professional staff from six additional Florida offices located in Maitland, Boca Raton, Fort Lauderdale, Fort Myers, Tampa, and Jacksonville, ensuring schedule commitments will be met for each assignment.

Qualifications

CED professionals provide a full range of services to assist municipalities, authorities, counties, community development districts, and state agencies. The advantage afforded by our comprehensive suite of in-house support disciplines streamlines communications, enabling us to deliver the best options and value for your community.

CED differentiates itself through a fully integrated multidisciplinary firm capable of delivering civil engineering, surveying, environmental, geotechnical, traffic, transportation, and construction management services under one organization. This integrated model enhances responsiveness, ensures consistent quality, and eliminates the administrative burden typically associated with coordinating multiple subconsultants. The firm's local presence within Miami-Dade County, combined with established relationships and familiarity with regional regulatory agencies, positions the team to provide efficient and proactive support to the District.

Our team is composed of licensed professional engineers and surveyors with extensive experience on a variety of projects.

- Licensed Civil/Transportation Engineers
- LEED® Accredited Staff
- Professional Land Surveyors
- Professional Traffic Operations Engineers (PTOE)
- Licensed Professional Land Planners
- Environmental Scientists & Engineers
- Licensed Professional Geologists
- Licensed Professional Architects

- Licensed Professional Landscape Architects
- Geographical Information System Professionals (GISP)
- Grant Writers and Managers
- Archaeologists
- Certified CEI & CBI Inspectors
- NICET Level III and IV Staff

Understanding

CED understands that the District is a mature, fully developed residential community where the focus has shifted from initial construction to long-term infrastructure stewardship and lifecycle management. Districts of this age commonly begin addressing second-generation infrastructure needs such as drainage system efficiency, pavement rehabilitation planning, structural and hardscape repairs, and verification of legacy as-built conditions. Our approach recognizes that maintaining system performance while minimizing disruption and avoiding reactive repairs is critical to preserving both infrastructure reliability and financial predictability for residents.

We recognize that the District Engineer must serve not only as a technical expert, but as a trusted advisor who helps the Board navigate evolving maintenance priorities and cost pressures. For communities like the District, this often includes evaluating stormwater conveyance and inlet performance, identifying early indicators of pavement and sidewalk lifecycle renewal, and providing practical recommendations for phased capital repairs. Our team emphasizes clear technical evaluations and concise memoranda that help the Board understand not just what improvements are needed, but when and why they should be implemented to avoid larger long-term costs or emergency expenditures.

CED also understands that residential districts frequently encounter quality-of-life concerns that intersect with engineering decision-making. Topics such as localized drainage performance, traffic calming or speeding concerns, parking and circulation patterns, and lake or common area maintenance can emerge as priorities even when they are operational in nature. Our approach is to evaluate these issues through a balanced lens that considers technical feasibility, community expectations, and fiscal impacts, ensuring the Board receives actionable guidance that is both practical and defensible.

In communities similar to Cutler Cay, engineering support often extends into areas where infrastructure performance directly influences resident experience. **We understand the District has recently had issues that may include traffic safety initiatives such as evaluating roadway geometry, signage effectiveness, and traffic calming measures in coordination with**



CED understands that the District was created in 2004 via the adoption of Ordinance 04-15 by Miami-Dade County pursuant to Chapter 190 of the Florida Statutes which allows for local units of special purpose government to plan, finance, construct, operate, and maintain public infrastructure in the Cutler Cay residential community, which includes 505 single-family residential dwellings within an overall 215.34 acre district. The District is governed by a five member Board of Supervisors and managed by a District Manager appointed by the Board of Supervisors.

Based upon Miami-Dade County Ordinance 04-15, the CDD operates and maintains roadways, stormwater management, utility, recreational, landscaping and entryway improvements within the District similar to a municipality in an incorporated area.

CED has extensive experience providing professional services to local units of governments seeking to operate, maintain, and improve public infrastructure such as roads, bridges, utilities, stormwater management, landscaping, and recreation. CED is currently providing similar services to many municipalities in the State of Florida and has provided similar services to local government units in other areas of the country. CED multi-disciplined staff in Florida will be a benefit to the District in any project it seeks to advance to maintain and improve its development infrastructure.

law enforcement efforts; stormwater assessments to address localized flooding or lake level management during extreme rainfall events; and shoreline and lakebank evaluations where erosion, vegetation transitions, or fluctuating water levels may impact long-term stability. Additionally, in South Florida environments where lakes and adjacent mangrove or wetland systems are present, coordination with environmental consultants and maintenance providers can support strategies that help mitigate standing water concerns and related mosquito conditions while maintaining regulatory compliance. Our role is to help the Board translate these types of concerns into clear engineering evaluations and practical, implementable solutions that balance safety, resilience, and fiscal responsibility.

From a delivery standpoint, the District benefits from a locally based engineering team with deep familiarity with Miami-Dade County infrastructure conditions and regulatory processes. Our fully integrated multidisciplinary platform allows the District to access civil engineering, surveying, environmental, and construction-phase support under one organization, enabling streamlined coordination and consistent quality without the complexity of managing multiple subconsultants. This structure is particularly valuable when addressing aging

infrastructure evaluations, as-built verification, or phased rehabilitation programs that benefit from coordinated technical disciplines.

Finally, we approach this engagement with a strong appreciation for the governance dynamics unique to CDD's. Effective District Engineers must translate technical findings into clear, fiscally responsible recommendations that support informed Board decisions and transparent communication with residents. This perspective is reinforced by the proposing Mr. Collings-Bonfill who currently serves as a CDD Board Chair of his community, providing firsthand insight into the priorities, constraints, and expectations that shape Board-level decision-making. Our commitment is to provide proactive engineering leadership that emphasizes infrastructure longevity, cost clarity, and collaborative partnership with the Board and District stakeholders to support the continued success and stability of the Cutler Cay community.

Capabilities/Areas of Expertise

Our engineers, geologists, surveyors, and technical staff take a responsive approach to help public clients achieve their capital improvement plan objectives with tailored solutions that optimize performance and value. Our experience with both public and private applications gives us valuable insight into the review process, and our in-house support streamlines communication, ensuring the best value for our clients.

Civil Engineering

CED offers comprehensive civil engineering services with a strong track record of success in both public and private sector projects. Our civil engineering expertise covers a wide range of project types, such as roadway and transportation improvements, grading, stormwater management systems & drainage improvements, streetscapes, signalization projects, facilities design and management, site planning, and site design & development, condition assessments, utility infrastructure (water and wastewater), process evaluation, improvements, and sustainable land development practices.

At the core of our approach is a commitment to delivering solutions that are not only technically sound but also aligned with local regulations, community goals, and long-term functionality. We begin each project with an in-depth due diligence and site analysis process. This allows our team to identify existing conditions, environmental constraints, permitting requirements, and potential engineering challenges. Our goal is to develop proactive strategies that mitigate risk and reduce the likelihood of costly revisions later in the project lifecycle.

Environmental Services

CED's team of environmental scientists, and licensed geologists and engineers deliver comprehensive environmental assessment and remediation services for projects of every scale. We work closely with all related engineering disciplines and agencies to achieve a responsible balance between preserving natural resources and meeting client needs. Our approach combines technical excellence with regulatory insight, ensuring sustainable solutions that comply with local, state, and federal requirements.

With thousands of successful environmental engineering projects completed for governmental, industrial, and commercial clients, CED brings unmatched experience in environmental compliance, permitting, and remediation. Our expertise spans storage tank assessment and closure, geotechnical/geologic assessments, hydrogeologic evaluations, hazardous material management, Brownfield grant preparation, and NEPA assessments. We also provide specialized services in natural resource assessments and permitting, including but not limited to wetlands delineations, threatened and endangered species surveys, species specific surveys, and submerged aquatic vegetation/benthic surveys.

Survey and Mapping Services

Boundary Surveys. For boundary projects, all parent parcel corners are located, as well as primary corners from plats, right-of-way maps, lines of occupation, and other reference material that may be used to develop a strong boundary determination. All of these locations are made using redundant measurements using the proper tool for the job. A Professional Surveyor and Mapper will weigh the evidence located and make a boundary determination.

Topographic Surveys. A typical project will usually consist of establishing secondary control to assist in the collection of the topographic features (curb, sidewalks, stripping, signs, utilities, drainage Survey for inlets at street intersections, bridge components, sign clearances, trees, etc.). Acquiring topographic features and elevations for the Digital Terrain Model (DTM) (3D Surface) would be collected using either tradition trigonometric locations with a Total Station and Data Collector, Static LiDAR (Leica P40/ P50), Mobile LiDAR (Riegl VMX-450 or 1HA), Unmanned Aerial System LiDAR (VAPOR 55), or any combination of two or more of these methods. Check sections would be collected to compare to the TIN / DTM. Leveraging these technologies gives our clients options to reduce contract costs and schedules; increase product quality and efficiency; more effectively manage projects and communication; and dramatically increase safety for our staff and the traveling public by keeping our survey crews out of the roadways.

Subsurface Utility Engineering (SUE) Services. CED provides subsurface utility engineering and management services that support a wide range of clients including project planners, engineers, designers, contractors and environmental consultants. We rely on our extensive experience and advanced industry technology to ensure our clients receive the most complete and up to date underground utility data possible. Following the SUE process is a proven cost-effective way to reduce unnecessary utility re-location efforts by accurately mapping existing utilities for the purpose of identifying potential conflicts and impacts to proposed infrastructure design and resolving these conflicts using the most cost-effective engineering solution. Having accurate underground utility information significantly reduces or eliminates potentially costly delays and change orders for re-design and safety risks for excavator crews. Our team of professionals provides SUE support services by adhering to the American Society of Civil Engineers (ASCE) Standard 38-02 "Standard Guideline for the Collection and Depiction of Existing Subsurface Utility Data".

Traffic & Transportation Engineering

CED's roadway design experts have led projects ranging in all sizes and complexities from large highway interchange projects to resurfacing efforts on local roadways. Our team features a local team of roadway design experts who have extensive roadway design experience in Florida, alongside a nation-wide support team who can be leveraged to provide new perspectives and additional workload capacity to meet the needs of the District. While we understand that the District may have its own standards, codes, and business practices, the roadway team brings a long resume of successful projects that comply with FDOT Design Standards and all federal, state, and local requirements that may be applicable based on the project scope.

Our team of experts has completed hundreds of design projects in both urban and rural settings and understands what it takes to successfully deliver roadway projects. The team will prepare roadway design and construction plans that will typically include horizontal alignment, typical sections, grading, drainage, soil erosion and sediment control design, profiles, and cross sections.

Geotechnical Engineering

CED is FDOT qualified for all necessary geotechnical materials testing work groups (9.1, 9.2, 9.4.1, & 9.5) and commits that we have the necessary resources and expertise to successfully provide all services required for this contract. Our proposed team has outstanding credentials and a well-established track record providing CMT, geotechnical, CEI, and other support services required for this contract on a wide range of similar projects. CED provides testing and analysis of the properties and performance behavior of soils and

all forms of materials used in the construction and development industries, including field testing of soils, asphalt, road base, concrete, and masonry.

Our in-house laboratory facility is accredited by FDOT and CMEC where we use FDOT test methods to ensure our clients meet all applicable building codes and project requirements with quality materials testing provided in a timely, cost effective, and practical manner. Our on-site professionals are CTQP (FDOT) and ACI certified and have performed testing for various projects as part of the geotechnical exploration and construction inspection and testing services.

Construction Engineering Inspection

CED is FDOT qualified for all CEI Work Groups (10.1, 10.3, 10.4, 10.5.1, and 10.5.2) as well as all necessary geotechnical materials testing work groups (9.1, 9.2 and 9.4.1) and commits that we have the necessary resources and expertise to successfully provide all services required for these facility repairs and various construction projects. We can assume full and sole responsibility for construction management elements of the projects. Our proposed team has outstanding credentials and a well-established track record providing CEI, grant administration, and other support services required for this contract on a wide range of similar projects. Projects are managed in accordance with corporate procedures to ensure successful delivery on compliance with the approved schedule, budget and quality standards. CED project managers operate within a team environment and we value our clients as team members and partners.

A key factor in successful project management is communication. Keeping our clients and other team members informed throughout the project life cycle is viewed as critical to overall project success. Upon receiving a CEI task, and prior to the pre-construction meeting, our CEI team will contact the District's Public Works Director to set up a pre-service meeting to discuss various aspects of the project administration.

CED will establish a line of communication, minimum performance expectation criteria, and a course of corrective actions for any unsatisfactory work at this meeting. We will also finalize the potential CEI staffing approvals, field office set up, budget management, invoice procedures, and supplemental amendments. Our team will ensure we have a process in place to coordinate with the Design Consultant for post design services as to avoid redundant activities and to manage allocated budget for the post-design services.

Landscape Architecture

CED's Landscape Architecture team is led by licensed and registered landscape architects and LEED accredited professionals who bring a multidisciplinary approach to every project. Our practice integrates environmental sensitivity, technical rigor, and thoughtful design to create functional, resilient, and inclusive public & private environments. With extensive experience spanning concept development through construction administration, we deliver solutions that balance project requirements within both the natural and built context.

Our team collaborates closely with architects, civil engineers, planners, and specialty consultants to ensure that site amenities, plant palettes, and hardscape elements contribute to a cohesive and durable design. We prioritize universal accessibility and barrier free design principles so that all community members can participate fully in the spaces we create. CED's core landscape architecture services are:

- Active & Passive Park and Recreation Design
- Aquatic Facility Design
- Athletic Facility & Site Lighting Design
- Barrier Free Compliance Review & Accessible Design
- Construction Observation & Administration
- DEP Licensed Tree Expert Services
- Conceptual & Site Master Planning
- LEED® and Sustainable Design Integration
- Licensed Irrigation Design
- Litigation Support & Expert Consultation
- Playground Inspection & Design
- Renderings, Graphics, and 3D Visualization
- Rooftop and Elevated Landscape Design
- Streetscape & Urban Public Realm Design
- Trail Planning, Alignment, and Design
- Vegetation Inventories, Analysis, and Maintenance Planning
- Wetland Delineation, Mitigation, and Restoration

Water/Wastewater

The CED Water/Wastewater team has successfully completed many complex, multi-disciplined water and wastewater treatment design projects throughout Florida. Our team is dedicated to providing services that ensure safe, efficient, and sustainable management of water resources and utilities infrastructure. Our team's technical skills encompass the planning, design, and optimization of treatment facilities and conveyance systems to meet, or exceed, both regulatory standards and the evolving needs of municipalities and industries.

Our teams focus is modernizing treatment design to develop solutions tailored to a client's unique goals, such as increasing treatment capacity, improving effluent quality, achieving regulatory compliance, increasing resiliency, or reducing long-term operating and maintenance expenses. Our Engineers work closely with stakeholders to understand these goals and translate them into technically sound, cost-effective designs.

At the heart of treatment design is the selection and integration of technologies that provide reliable, highperformance treatment under varying conditions. This includes advanced biological processes, membrane systems, nutrient removal strategies, chemical reactivity, and disinfection techniques. Thoughtful process modeling and pilot testing often guide these choices, ensuring that the final design is both efficient and adaptable. Additionally, energy and resource recovery strategies are increasingly being incorporated into wastewater treatment projects, aligning with client.

Grant Management/Administration

CED brings extensive experience in grant writing and administration, particularly in supporting municipalities and local government agencies. Our Grants & Funding Services team focuses on strategic research, application preparation, and ensuring full compliance with administrative requirements. Having successfully assisted over 80 municipalities, counties, and utility authorities, we have secured funding for over 394 projects, totaling more than \$265M in grants and low-interest loans.



Ability to Meet Time and Budget Requirements

CED is committed to meeting all “phase specific” time and budget requirements for the agreed upon scope of services negotiated for each task in this contract.



Control of Schedule

Our success on similar on-call contracts is largely due to our commitment of resources and attention to critical path delivery schedules. We want you to be confident in assigning task authorizations to the CED team. It is our goal to track our capacity and available resources while also utilizing our team members responsibly to ensure timely delivery of services and all commitments are met on every task authorization. Mr. Collings-Bonfill will coordinate with the District’s Project Manager to develop a proposed work plan that includes specific tasks, milestones, deliverables, completion schedules.

The status of each task authorization will be closely monitored on a weekly basis to make sure all tasks remain on schedule. Supporting this contract for the District is not only a priority of our Miami office, but also our Florida leadership. Our management staff hold daily scheduling and weekly project management meetings, which include leadership from all Florida offices. This allows our team to leverage resources regionally and prioritize task authorizations with the appropriate staff levels to ensure the quality and responsiveness the District expects from our team is maintained without sacrificing other obligations. We envision our relationship with the District will develop quickly and strengthen with this contract and CED is prepared to grow with your needs as an organization and succeed with each task authorization.

For complex projects, Microsoft Projects is used to create a schedule based on critical path timelines. Daily staff assignments are made collaboratively by our project management team in Microsoft Teams group that is accessible to all staff, assuring that our staff talents are deployed to effectively service District schedules.



Control of Budget

This is a Work Order-based contract with each task negotiated on an individual basis. Mr. Collings-Bonfill’s experience with a wide variety of tasks makes him familiar with the level of effort required for performing specific work elements included in various types of projects. Having negotiated numerous work orders on previous contracts, he understands the typical expectations regarding anticipated work efforts and how to efficiently utilize personnel. Mr. Collings-Bonfill will be responsible for the cost control and overall

budget maintenance of the contract. **Budgets for each task will be tracked and maintained on a weekly basis using the project management portals included in BST Financial Software (Ver.11).** This allows for monitoring of project financial details to quickly determine which activities are negatively impacting the schedule or budgets and institute aggressive corrections including adding resources to prevent cost overruns. Invoicing will be prepared monthly and/or to coincide with milestone deliverables and will document the percent complete status for each task.



QA/QC Program

CED has a strict policy to establish, commit to, implement, and monitor a Quality Assurance/Quality Control (QA/QC) Program (QCP) for every project, allowing for the production of quality deliverables for our clients. This QA/QC program is continually monitored to maximize its success and to identify possible improvements. Each CED employee is a part of this QA/QC program. Their use of carefully managed processes, guidelines, and state-of-the-art tools is conducive to the creation of products and services which meet defined client requirements. The CED QA/QC program applies to all of our disciplines and office locations. Throughout the organization, each Department Manager is responsible for the following:

- Communicating the firm’s QA/QC policy to employees
- Developing quality plans and reviews
- Implementing a quality management system to consistently achieve superior services
- Monitoring and continually improving the level of client satisfaction
- Providing mentoring and training to develop and continually improve employee performance

The CED QA/QC Program manual is distributed to all Project Managers, Department Managers, Division Directors, and Executives of the firm. The manual is designed to help Project Managers implement practices for effective project management and incorporates department-specific guidelines as they are developed. We have designated one of our senior engineering managers, Ricardo Jimenez, PE as our QA/QC Manager for this contract. He will ensure QA/QC Program utilization for all aspects of this contract with oversight of all deliverables prior to submitting them to the District.

Quality is accomplished through standardized field and office workflows and a series of systematic reviews throughout each assignment and documenting production process. To achieve the highest possible quality, deliverables for each assignment will be reviewed by a qualified independent reviewer from the appropriate technical discipline. Our QCP for all submittals is comprehensive in nature, having a minimum

of two reviewers for every assignment. As depicted in the diagram below, each reviewer follows a strict order of process which involves thorough back-checking of all documentation. The reviewer's comments will be coded in **RED**, plans will be updated per the comments and noted in **GREEN**, and the back checker will verify the changes are made with **BLUE** ink. The final step of the process is a QA review by senior project management to ensure the QCP process was followed.

No. _____	Date: _____
CHECK PRINT	
Dwg. Checked against calcs. And calc. check confirmed	
By: _____	Date: _____

Checked By: _____	Date: _____
Backchecked By: _____	Date: _____
Corrected By: _____	Date: _____
Verified By: _____	Date: _____



Safety

Safety is a core value for CED. CED has adopted the Behavior Based Safety (BBS) model as an enhancement to our existing safety program to live a Safety Culture at work and home. CED crew members and project management maintain Intermediate Maintenance of Traffic (IMOT) certifications as well as OSHA 10-hour, OSHA 30-hour, OSHA HazWOPER, confined space entry, coalition for construction safety (CCS), E-Rail Safe, and first aid/CPR training. We regularly inventory all personnel and vehicle safety equipment and use daily Health & Safety Checklists forms and on-site "tail gate" meetings to assess and mitigate for potential hazards. Staff involved with field visits will be equipped with and utilize required safety equipment including but not limited to safety vests and hard hats.



CED is not your typical Civil Engineering firm because of our in-house services we can provide.

This benefit saves our clients time and money because they have our full suite of services supporting them in multiple ways if needed. Such as emergency response, site/civil design, geotechnical or environmental engineering.

For example: Traditionally, SUE firms within Florida use their GPR results solely for QL-B utility designation, as is requested in this RFP.

GPR results can also provide valuable information that geophysicists (typically found in only geotechnical engineering firms) can also analyze for subsurface anomalies that could indicate geotechnical issues.

CED not only provides full level SUE capabilities, but also in-house geophysical experts who can analyze the collected data for indications of buried debris, indications of karst activity, and other problematic soil conditions. This dual use of the collected information significantly increases the value of the deliverable to the client. Particularly, we have found this combination to be very effective when analyzing utility issues, such as utility failures or distresses.



Past Performances

CED has provided professional engineering and consulting services on numerous projects for municipalities throughout the state, and will leverage this experience to help manage and execute this contract successfully for the District. CED prides itself on its long-standing relationships that enable candid and concise communication at every level of government. Our licensed Professional Engineers and Surveyors can provide any aspect of Municipal Engineering Services that the District may need. CED is currently contracted and/or providing a full spectrum of a multitude of services through similar professional services contracts for multiple municipalities including the projects and clients outlined in this section.

Similar Projects

Professional Engineering Services/City Engineer | New Port Richey, FL

CED is serving as the City Engineer for the City of New Port Richey, a critical role that encompasses a wide range of responsibilities aimed at ensuring the city's infrastructure is well-designed, functional, and sustainable. In this capacity, CED is responsible for the comprehensive design of capital projects, which includes overseeing large-scale public works such as new roadways, bridges, public buildings, and other essential infrastructure. These projects play a vital role in the city's growth and modernization and must be completed in compliance with local, state, and federal regulations, as well as within budget and on time.

In addition to capital projects, CED is providing expert advice and consultation on the maintenance and operation of the City's utilities, including water, sewer, and other vital systems. This will ensure that utilities function smoothly, meet the demands of the city's residents, and are maintained in a cost-effective and sustainable manner. CED as City Engineer is also playing a pivotal role in stormwater infrastructure management, addressing the design and upkeep of systems that control stormwater runoff, prevent flooding, and reduce water pollution - critical concerns in an area that may face heavy rainfall and potential flooding. Another key responsibility of CED is overseeing the City's transportation systems, including the design, maintenance, and improvement of roads, traffic signals, pedestrian pathways, and other infrastructure essential for safe and efficient mobility. This involves planning and implementing improvements to alleviate congestion, enhance accessibility, and ensure the transportation network supports the City's current and future needs.

Completion: 2024-Ongoing | **Design Cost:** Ongoing | **Services/Relevancy:** Plans Review, Attending Meetings, Permitting, EOR



General Land and Engineering Surveying and Underground Surveys for Miami-Dade Aviation Department | Miami, FL

Since 2019, CED has supported the County for any miscellaneous professional engineering & surveying services. Multiple assignments have supported the Miami Aviation Department and resulting in 7+ subsequent task orders of the same nature. The TWO scopes have included full topographic survey, Horizontal and vertical control, drainage survey, Nondestructive Sub-Surface Utility Verification and Ground Penetrating Radar (GPR).

Our surveying services typically begin with researching the public records for existing primary control network for the projects. Our services have consisted of establishing the project's horizontal/vertical controls, leveraging static LiDAR scanning of some gates areas for MIA Airport to ensure detailed digital terrain mapping (DTM) for the design of new grease traps, cost efficiencies, and overall safety. This data is combined with conventional topographic information of the locations of existing improvements, including the drainage and sanitary structures and utilities within the project limits.

Completion: 2025-Ongoing | **Design Cost:** \$71k | **Services/Relevancy:** Sub-Surface Utility Verification, Ground Penetrating Radar (GPR), General Land Surveying Services (Topographic, Horizontal and Vertical Control), and Existing Utility Coordinators and Field Verification



Residential Site Development, Cleveland St. | Clearwater, FL

CED provided site development for new residential building within the existing overall property which consists of approximately 3.38 acres of land and currently contains an existing five-story 175,000 SF office building, and at grade parking in the rear of the site. The existing building is served by a cooling tower also located at the rear of the site, Clearwater, FL. The existing building is to be repurposed and renovated to ultimately contain Utility Infrastructure, Office Space, Self-Storage, and a Community Center to serve the local area. The proposed project includes adding two additional apartment buildings in the rear of the site where the existing parking field exists. These buildings will contain approximately 250 multi-family residential units. This project is located within the Downtown Overlay District, more specifically the Downtown Gateway Character District and requires a Flexible Development Application along with a transfer of development rights from the City's bank to allow the density of residential proposed. CED is providing Urban Street Scape, Civil/Site, Stormwater Management, Landscape and Lighting, Public Hearing Support, Permit processing and Construction Administration services to support this project.



Completion: 2025 | **Design Cost:** \$124k | **Services/ Relevancy:** Urban Street Scape, Civil/Site, Stormwater Management, Landscape and Lighting, Public Hearing Support, Permit processing and Construction Administration

Rocky Creek Playground Improvements | Miami, FL

CED provided geotechnical exploration for the rehabilitation of the playground area at Rocky Creek Park. Exploration included SPT borings and permeability tests. From the data collected, laboratory tests were performed and soil parameters for design of the foundation elements was provided. Coordination between the County, the design studio, and parks staff was critical to maintaining a safe exploration program in an active park. CED observed all safety regulations and scheduling requests to provide a satisfactory experience for all parties.

The CED team has a long history of working on parks and recreation projects and find each project to be unique, allowing particularly for opportunities for value engineering. This project was no different, and several different options were looked at to provide the best foundations value to the County on this project.



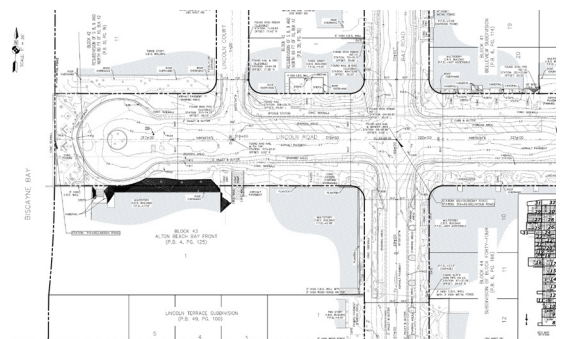
Completion: 2022 | **Design Cost:** \$75k+ (TWO based) | **Services/ Relevancy:** Geotechnical Engineering, Construction, Engineering, and Inspection Services, Construction Materials Testing (CMT), In-house Laboratory, General Services

Districtwide Right-of-Way (ROW) Mapping Consultant, FDOT District 6 | Miami, FL

This is an on-call contract with work performed on a TWO basis for assignments located throughout Miami-Dade and Monroe Counties. Typical services performed include ROW surveys, sectional retracement, Right-of-Way alignment, Right-of-Way Mapping, Maintenance Mapping, Control Surveys, and peer reviews. Our team completed 57 TWOs under this contract.

Sample projects include:

- SR 907 (Alton Road) from Michigan Avenue to Collins Avenue Right-of-Way Map to include performing Boundary Surveys and preparing a ROW Map and legal descriptions for Right-of-Way and easement acquisitions.
- SR 826 (Palmetto Expressway) from SR 5 (US 1) to SR A1A (Collins Avenue) Control Survey Map to include establishing control, alignment retracement, and ROW survey.
- SR 5 (Overseas Highway) at Big Pine Key, Monroe County Parcel Sketch to include performing a Boundary Survey and preparing sketch and legal description for quitclaim deed of surplus parcel.
- SR 826 (Palmetto Expressway) from NW 2nd Avenue to SR (US 1) Control Survey Map to include establishing control, alignment retracement, sectional survey, and ROW survey.



Completion: 2025- Ongoing | **Design Cost:** \$1.5M+ (TWO based) | **Services/ Relevancy:** Survey Services (Control Survey, ROW Surveys and Mapping, Peer Reviews)

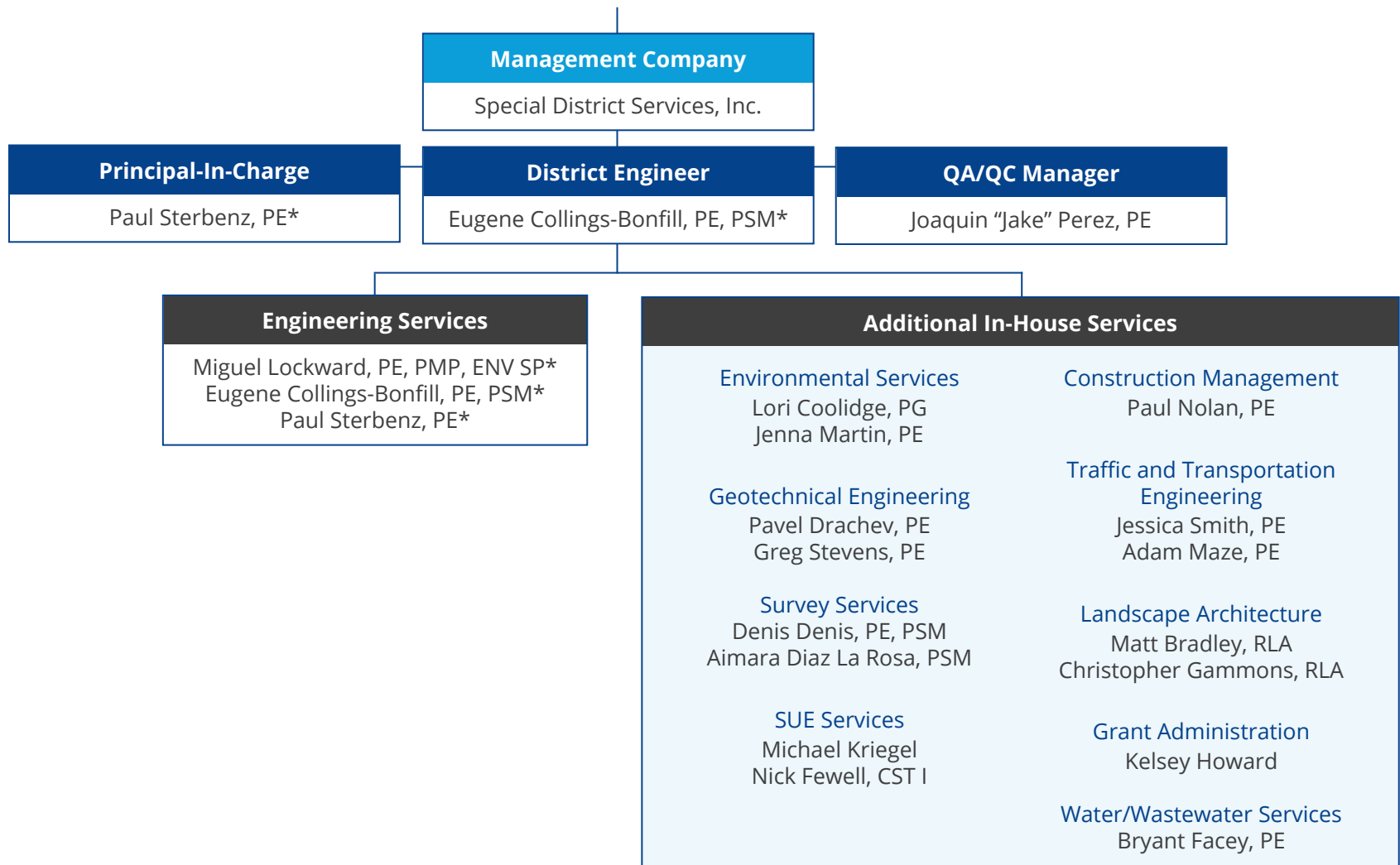


Tab 3

Personnel

Organizational Chart

CUTLER CAY COMMUNITY DEVELOPMENT DISTRICT



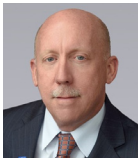
The CED proposed team has the expertise and experience necessary to effectively manage, coordinate, and provide trusted services to the District. We have the extensive in-house team to support Mr. Collings-Bonfill to ensure the District is supported in every aspect. Our team is available and ready to execute this contract.

** Key staff resumes included*

Personnel

Key Team Personnel

Having the ability to sharing our extensive in-house discipline expertise under one roof is an advantage to our clients because it is applied throughout our strategic company network.



Paul Sterbenz, PE will serve as the Principal-In-Charge. Mr. Sterbenz has been providing engineering services to municipalities for the past 35 years. He has been accountable for the design, permitting, construction, and management of municipal capital projects from concept design through construction including roads, traffic signals, utilities, parks and structures. Mr. Sterbenz has prepared and submitted grant applications on behalf of municipalities to County and State agencies to obtain funding for capital projects, studies, and stormwater compliance work. He has also been involved in the review of plans, applications, reports and other documents submitted by developers to local Land Development Review Boards in support of applications to develop private property, to evaluate compliance with local Land Development Codes and applicable industry standards and provide advice to the Boards during the public hearing process.



Eugene Collings Bonfill, PE, PSM will serve as the District Engineer and Primary Point of Contact for the District. Mr. Collings-Bonfill brings over 28 years of diverse and in-depth experience in the engineering and construction industry. His professional background includes a strong foundation in land surveying, engineering design, geotechnical coordination, program and project management, and construction oversight, particularly for public-sector infrastructure projects. He has successfully led multidisciplinary teams on complex, high-profile projects for municipalities and government agencies, demonstrating a keen ability to manage schedules, budgets, regulatory compliance, and stakeholder communication. His familiarity with South Florida's regulatory environment and site-specific challenges positions him to deliver practical, data-driven solutions tailored to the region's unique conditions.

In addition to his professional background, Mr. Collings-Bonfill **currently serves as Chair of a Community Development District Board**, offering a unique perspective on the responsibilities, expectations, and decision-making processes of District Supervisors. This experience allows him to approach the District Engineer role not only as a technical professional, but as a strategic

advisor who understands the importance of balancing infrastructure needs with fiscal responsibility and community expectations.

Mr. Collings-Bonfill's connection to the Cutler Cay community through family residents within Cutler Cay, along with his professional relationship with the District's management team, further strengthens CED's ability to provide attentive, locally informed service. The CED team is committed to delivering clear technical guidance, proactive planning, and collaborative support that advances the District's long-term infrastructure and operational objectives.



Miguel Lockward, PE, PMP, ENV SP, will serve as the Civil Engineering Lead. Mr. Lockward has over 15 years of diverse experience in engineering design and construction management, including practice in both the Dominican Republic and the United States. Areas of expertise include stormwater management systems, water distribution, sanitary sewer collection and pump station design, land development, transportation, work zone traffic control, construction inspections, and utility coordination.

Resumes for key staff can be found in Tab 4: Standard Form 254 and 255.

Capacity & Workload

Our leadership team in the Miami office manages weekly utilization meetings with all key staff for the purpose of evaluating daily workload projections for the week ahead. Following this meeting is a Southeast based operations meeting discussing the same item and uses this as a gauge for filling gaps where staff is needed. Having these weekly operations meetings provides project managers with the ability to forecast project completion dates and able to rely on this information to keep projects on schedule.

CED's management staff carefully allocates the firm's resources to address the constantly shifting market demand for projects. We promote a management philosophy that supports cross training our staff to prepare them to be available in short notice and to be qualified to support the variety of disciplines which have the potential to be included in District requested Task solutions for their projects. This enables CED to maintain optimum utilization of highly trained individuals who provide resources for "Fast-Track" project completion. This approach has enabled us to maintain a steady stream of projects, while enabling us to allocate adequate resources to immediately respond to new Tasks from the District.

Careful project management will allow current staff and company workloads to be adjusted within established schedules for each Task. CED is dedicated to addressing the needs of the District in a manner that is responsive, budget-conscious, focused, and technically sound.

Projected Projects: CED holds several TWO based contracts with federal, state, and local agencies that will continue through the duration of this contract. Our history of performance illustrates our ability to manage multiple active contracts and projects by focusing on communication, collaboration, and work-sharing. Our local management staff constantly forecasts our clients’ needs and upcoming commitments to develop staffing requirements and responsible growth needs to meet all expectations and commitments.

CED is readily available and has the capacity to meet or exceed schedule demands. We are confident that supporting our existing projects/contracts will not diminish our ability to maintain capacity or our commitment to the District under this contract.

The graphic below outlines the key staff’s availability for this contract:

Key Staff Workload	
Name Role	Availability
Paul Sterbenz, PE Principal-in-Charge	40%
Eugene Collings-Bonfill, PE, PSM District Engineer	75%
Miguel Lockward, PE, PMP, ENV SP Civil Engineering Lead	60%

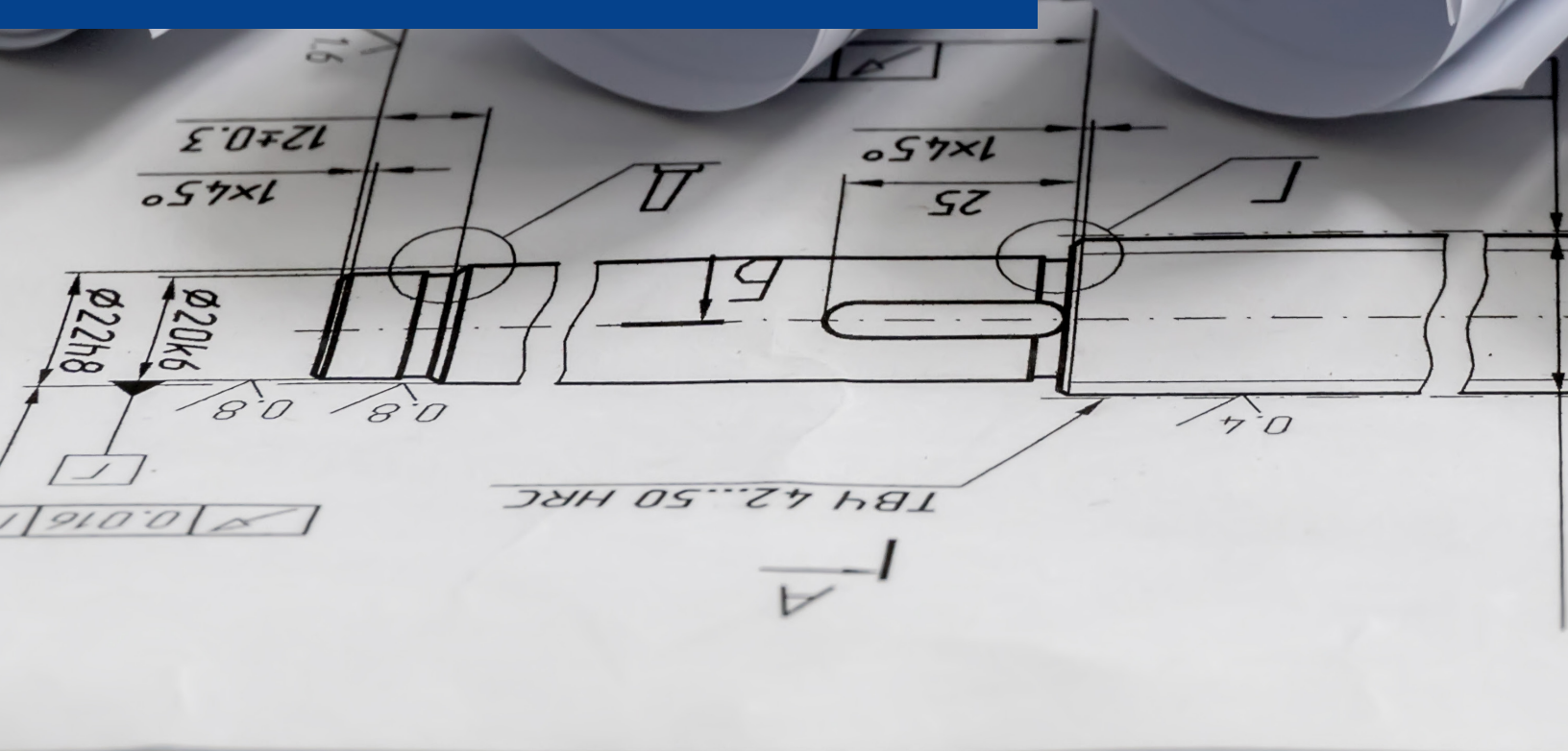


CED is deeply invested in the communities where we work and live. Florida is our home, and we’re proud to give back to the friends, families, and neighbors we serve. We have participated in several environmental cleanups, such as The Great Port Cleanup. Tons of trash is collected every year and this make a huge positive impact for our local community.

Our team actively collaborates with the Florida Legislature through our involvement with professional societies and organizations to advocate for meaningful, community-driven change. Our team’s commitment goes beyond the job site, as we lead and support local initiatives such as community cleanup days, charity golf tournaments for student scholarships, and sponsorship of student engineering societies. For us, engineering isn’t just a profession - it’s a way to uplift and shape the future of our community.

Tab 4

Standard Form 254 & 255



Standard Form 254

STANDARD FORM (SF) 254 Architect-Engineer and Related Services Questionnaire	1. Firm Name/Business Address: Colliers Engineering & Design, Inc. 7400 Corporate Center Dr, Ste C, Miami, FL 33126				2. Year Present Firm Established 1984	3. Date Prepared: 4/29/26																																										
	4. Specify type of ownership and check below, if applicable.																																															
	<input type="checkbox"/> A. Small Business																																															
	<input type="checkbox"/> B. Small Disadvantaged Business																																															
<input type="checkbox"/> C. Woman-owned Business																																																
5. Name of Parent Company, if any: The Colliers Group, Inc. 666 Fifth Avenue New York, NY 10103			5a. Former Parent Company Name(s), if any, and Year(s) Established: Richard M. Maser & Associates, P.A., (1984); Richard M. Maser & Associates, P.A. (1985); Maser, Sosinski & Associates, P.A.(1987) Maser Consulting P.A. (1998); Maser Consulting, Inc. 2020																																													
6. Names of not more than Two Principals to Contact: Title/Telephone 1) Paul M. Sterbenz, PE, Senior Principal/ 908.507.7353 2)																																																
7. Present Offices: City / State / Telephone / No. Personnel Each Office See following page.				7a. Total Personnel <u>2737</u>																																												
8. Personnel by Discipline: (List each person only once, by primary function.)																																																
<table style="width:100%; border:none;"> <tr> <td style="width:15%;"><u>4</u> Administrative</td> <td style="width:15%;">_____ Electrical Engineers</td> <td style="width:15%;">_____ Oceanographers</td> <td style="width:15%;"><u>6</u> Project Managers</td> </tr> <tr> <td>_____ Architects</td> <td>_____ Estimators</td> <td>_____ Planners: Urban/Regional</td> <td><u>2</u> Discipline Leaders</td> </tr> <tr> <td>_____ Chemical Engineers</td> <td>_____ Geologist</td> <td>_____ Sanitary Engineers</td> <td><u>7</u> Crew Chiefs</td> </tr> <tr> <td><u>4</u> Civil Engineers</td> <td>_____ Hydrologists</td> <td>_____ Soils Engineers</td> <td><u>9</u> Technicians</td> </tr> <tr> <td><u>4</u> Construction Inspectors</td> <td>_____ Interior Designers</td> <td>_____ Specification Writers</td> <td><u>18</u> Designers</td> </tr> <tr> <td>_____ Draftsmen</td> <td>_____ Landscape Architects</td> <td>_____ Structural Engineers</td> <td>_____</td> </tr> <tr> <td>_____ Ecologists</td> <td>_____ Mechanical Engineers</td> <td>_____ Surveyors</td> <td>_____</td> </tr> <tr> <td>_____ Economists</td> <td>_____ Mining Engineers</td> <td>_____ Transportation Engineers</td> <td>_____</td> </tr> </table>						<u>4</u> Administrative	_____ Electrical Engineers	_____ Oceanographers	<u>6</u> Project Managers	_____ Architects	_____ Estimators	_____ Planners: Urban/Regional	<u>2</u> Discipline Leaders	_____ Chemical Engineers	_____ Geologist	_____ Sanitary Engineers	<u>7</u> Crew Chiefs	<u>4</u> Civil Engineers	_____ Hydrologists	_____ Soils Engineers	<u>9</u> Technicians	<u>4</u> Construction Inspectors	_____ Interior Designers	_____ Specification Writers	<u>18</u> Designers	_____ Draftsmen	_____ Landscape Architects	_____ Structural Engineers	_____	_____ Ecologists	_____ Mechanical Engineers	_____ Surveyors	_____	_____ Economists	_____ Mining Engineers	_____ Transportation Engineers	_____											
<u>4</u> Administrative	_____ Electrical Engineers	_____ Oceanographers	<u>6</u> Project Managers																																													
_____ Architects	_____ Estimators	_____ Planners: Urban/Regional	<u>2</u> Discipline Leaders																																													
_____ Chemical Engineers	_____ Geologist	_____ Sanitary Engineers	<u>7</u> Crew Chiefs																																													
<u>4</u> Civil Engineers	_____ Hydrologists	_____ Soils Engineers	<u>9</u> Technicians																																													
<u>4</u> Construction Inspectors	_____ Interior Designers	_____ Specification Writers	<u>18</u> Designers																																													
_____ Draftsmen	_____ Landscape Architects	_____ Structural Engineers	_____																																													
_____ Ecologists	_____ Mechanical Engineers	_____ Surveyors	_____																																													
_____ Economists	_____ Mining Engineers	_____ Transportation Engineers	_____																																													
9. Summary of Professional Services Fees Received: (Insert index number)				Ranges of Professional Services Fees INDEX																																												
Last 5 Years (most recent year first)																																																
				1. Less than \$100,000 2. \$100,000 to \$250,000 3. \$250,000 to 500,000 4. \$500,000 to \$1 million 5. \$1 million to \$2 million 6. \$2 million to \$5 million 7. \$5 million to \$10 million 8. \$10 million or greater																																												
<table style="width:100%; border:none;"> <tr> <td style="width:20%;"></td> <td style="width:10%; text-align:center;">20</td> <td style="width:10%; text-align:center;">25</td> <td style="width:10%; text-align:center;">20</td> <td style="width:10%; text-align:center;">24</td> <td style="width:10%; text-align:center;">20</td> <td style="width:10%; text-align:center;">23</td> <td style="width:10%; text-align:center;">20</td> <td style="width:10%; text-align:center;">22</td> <td style="width:10%; text-align:center;">20</td> <td style="width:10%; text-align:center;">21</td> </tr> <tr> <td>Direct Federal contract work, including overseas</td> <td style="text-align:center;">7</td> <td style="text-align:center;">6</td> <td style="text-align:center;">6</td> <td style="text-align:center;">6</td> <td style="text-align:center;">6</td> <td style="text-align:center;">5</td> <td colspan="4"></td> </tr> <tr> <td>All other domestic work</td> <td style="text-align:center;">8</td> <td style="text-align:center;">8</td> <td style="text-align:center;">8</td> <td style="text-align:center;">8</td> <td style="text-align:center;">8</td> <td colspan="4"></td> </tr> <tr> <td>All other foreign work*</td> <td colspan="10">_____</td> </tr> </table>					20	25	20	24	20	23	20	22	20	21	Direct Federal contract work, including overseas	7	6	6	6	6	5					All other domestic work	8	8	8	8	8					All other foreign work*	_____											
	20	25	20	24	20	23	20	22	20	21																																						
Direct Federal contract work, including overseas	7	6	6	6	6	5																																										
All other domestic work	8	8	8	8	8																																											
All other foreign work*	_____																																															
* Firms interested in foreign work, but without such experience, check here: <input type="checkbox"/>																																																

Location	Address Line 1	Address Line 2	City	State/Territory	Postal Code	Phone Area Code	Phone Dial Number	Employee Count
Agawam, MA	67 Hunt Street	Suite 205	Agawam	MA	1001	413	5920030	5
Albany, NY	18 Corporate Woods Boulevard	4th Floor	Albany	NY	12211	518	4593252	113
Albuquerque, NM	2703 Broadbent Parkway NE	Suite B	Albuquerque	NM	87107	505	4336383	9
Atlanta, GA	1305 Mall of Georgia Boulevard	Suite 120	Buford	GA	30519	678	2884491	16
Austin, TX	5901 Vega Avenue	Suite 100	Austin	TX	78735	512	2878370	11
Biddeford, ME	234 Main Street	1st and 2nd floor	Biddeford	ME	4005	207	4817080	6
Binghamton, NY	71 State Street	1st Floor, Suite 104	Binghamton	NY	13901	607	3333116	5
Boca Raton, FL	7284 West Palmetto Park Road	Suite 201-S	Boca Raton	FL	33433	877	6273772	11
Boston, MA	100 Federal Street	13th Floor	Boston	MA	2110	617	3308000	21
Brunswick, ME	41 Church Road		Brunswick	ME	4011	207	4817080	14
Bryan, TX	3091 University Drive East	Suite 320	Bryan	TX	77802	979	4315245	4
Buffalo, NY	40 LaRiviere Drive	Suite 200	Buffalo	NY	14202	716	8523211	70
Cary, NC	128 Towerview Court		Cary	NC	27513	919	8000997	9
Chandler-East Valley, AZ	2250 E Germann Rd	Suite 8	Chandler	AZ	85286	602	4900535	97
Charlotte, NC	5275 Parkway Plaza Boulevard	Suite 100	Charlotte	NC	28217	980	2453161	30
Clinton, NJ	Shelbourne at Hunterdon	53 Frontage Road	Hampton	NJ	8827	908	2380900	24
Columbia, MD	7001 Columbia Gateway Drive	Suite 220	Columbia	MD	21046	443	3936021	1
Columbia, SC	111 Executive Center Drive	Suite 245	Columbia	SC	29210	803	7495486	6
Columbus, OH	1500 Lake Shore Drive		Columbus	OH	43204	877	6273772	7
Conshohocken, PA	181 Washington Street	Suite 430	Conshohocken	PA	19428	484	5677664	35
Corpus Christi, TX	2020 N. Bus. Hwy 35		Aransas Pass	TX	78336	361	7922803	7
Dallas, TX	4500 Ratliff Lane	Suite 113	Addison	TX	75001	214	6131204	9
Denver, CO	365 Inverness Parkway	Suite 100	Englewood	CO	80112	303	7316216	36
Egg Harbor, NJ	500 Scarborough Drive	Suite 108	Egg Harbor Township	NJ	8234	609	9104068	16
Exton, PA	410 Eagleview Boulevard	Suite 104	Exton	PA	19341	610	2549140	23
Fort Lauderdale, FL	5320 Northwest 35th Avenue	Suite 210	Fort Lauderdale	FL	33308	754	7322110	17
Fort Myers, FL	12821 Commerce Lakes Drive	Units 3 and 4	Fort Myers	FL	33914	407	2886147	3
Fort Worth, TX	2011 E Kirkwood Boulevard	Suite 120	Southlake	TX	76082	682	3505160	12
Goodlettsville, TN	405 2 Mile Pike	Suite E	Goodlettsville	TN	37072	615	6862545	26
Grand Rapids, MI	560 5th Street Northwest	Suite 305	Grand Rapids	MI	49504	616	8274270	2
Hamilton, NJ	1000 Waterview Drive	Suite 201	Hamilton	NJ	8691	609	5878200	23
Hamilton, OH	100 S Third Street		Hamilton	OH	45011	567	3181531	28
Hingham, MA	35 Pond Park Road	Bay 16	Hingham	MA	2043	781	4527121	7
Holmdel, NJ	101 Crawfords Corner Road	Suite 3400	Holmdel	NJ	7733	732	3831950	26
Houston, TX	13501 Katy Freeway	Suite 1350	Houston	TX	77079	281	6747560	299
Jacksonville, FL	4190 Belfort Road	Suite 250	Jacksonville	FL	32216	904	7604503	28
Knoxville, TN	6515 Clinton Highway	Suite 100	Knoxville	TN	37912	615	6862575	15
Lansing, MI	7050 West Saginaw Highway	Suite 200	Lansing	MI	48917	517	2729835	67
Lehigh Valley, PA	1110 American Parkway	Building 10	Allentown	PA	18109	610	8684201	24
Los Angeles, CA	865 South Figueroa Street	Suite 3500	Los Angeles	CA	90017	213	6271214	2
Madison, CT	135 New Road		Madison	CT	6443	860	3950055	30
Mays Landing, NJ	5439 Harding Highway		Mays Landing	NJ	8330	800	2583787	26
McLean, VA	8444 Westpark Drive	Suite 120	McLean	VA	22102	703	5648484	9
Melville, NY	534 Broadhollow Road	Suite 305	Melville	NY	11747	610	8344080	11
Miami, FL	7400 Corporate Center Drive	Suite C	Miami	FL	33126	305	5979701	52

Location	Address Line 1	Address Line 2	City	State/Territory	Postal Code	Phone Area Code	Phone Dial Number	Employee Count
Mt. Arlington, NJ	400 Valley Road	Suite 304	Mt. Arlington	NJ	7856	973	3983110	56
Mt. Laurel, NJ	2000 Midlantic Drive	Suite 100	Mount Laurel	NJ	8054	856	7970412	79
Nashville, TN	5141 Virginia Way	Suite 420	Brentwood	TN	37027	615	6862575	26
New Braunfels, TX	640 N Walnut Avenue	Suite 1101	New Braunfels	TX	78130	830	2206042	13
New York, NY	1114 6th Avenue	12th Floor	New York	NY	10036	212	7687070	15
Newburgh, NY	555 Hudson Valley Avenue	Suite 101	New Windsor	NY	12553	845	5644495	27
Norfolk, VA	2500 Almeda Avenue	Suite 115	Norfolk	VA	23513	757	2160500	10
Orlando, FL	1101 North Lake Destiny Road	Suite 415	Maitland	FL	32751	321	4419405	20
Philadelphia, PA	1500 JFK Boulevard	Suite 700	Philadelphia	PA	19102	215	8619021	61
Phillipsburg, NJ	480 Memorial Parkway	Suite A	Phillipsburg	NJ	8865	908	4544190	15
Phoenix, AZ	4742 North 24th Street	Suite 270	Phoenix	AZ	85016	602	4900535	127
Phoenix-West Valley, AZ	1830 N 95th Avenue	Suite 110	Phoenix	AZ	85037	602	4900535	26
Pittsburgh, PA	1501 Reedsdale Street	Suite 302	Pittsburgh	PA	15233	412	6185390	14
Providence, RI	72 Pine Street		Providence	RI	2903	401	2341055	12
Raleigh, NC	2000 Regency Parkway	Suite 295	Cary	NC	27518	919	4396082	22
Remote	N/A	N/A	N/A	N/A	N/A	N/A	N/A	359
Rochester, NY	280 East Broad Street	Suite 200	Rochester	NY	14604	585	2325135	173
Roseville, MN	1970 Oakcrest Avenue	Suite 103	Roseville	MN	55113	612	4647120	3
San Antonio, TX	3421 Paesanos Parkway	Suite 103	San Antonio	TX	78231	210	9798444	105
Simsbury, CT	8 Wilcox Street		Simsbury	CT	6070	860	2641624	1
Southfield, MI	20750 Civic Center Drive	Suite 305	Southfield	MI	48076	248	6631289	20
Syracuse, NY	120 Madison Street	Tower 2, Suite 500	Syracuse	NY	13202	315	4225200	16
Tampa, FL	5471 W. Waters Avenue	Suite 100	Tampa	FL	33634	813	2071061	26
Toledo, OH	3410 Briarfield Boulevard	Suite C	Maumee	OH	43537	567	3181531	59
Totowa, NJ	45H Commerce Way		Totowa	NJ	7512	973	8121818	14
Trevoze, PA	3800 Horizon Blvd	Suite 105	Trevoze	PA	19053	215	6394200	13
Washington DC	1625 Eye Street, NW	Suite 950	Washington	DC	20006	202	8624350	18
Westchester, NY	400 Columbus Avenue	Suite 180E	Valhalla	NY	10595	914	3477500	14
Wilmington, NC	301 Government Center Drive	Suite 201	Wilmington	NC	28403	910	4443517	23
Woodcliff Lake, NJ	300 Tice Boulevard	Suite 101	Woodcliff Lake	NJ	7677	845	3520411	45

Profile of Firm's Project Experience, Last 5 Years

Profile	Number of	Total Gross Fees (in thousands)	Profile Code	Number of Projects	Total Gross Fees (in thousands)	Profile Code	Number of Projects	Total Gross Fees (in thousands)
1) 011	151	4,615	11) 046	16,637	35,169	21) 096	1,307	13,244
2) 014	288	2,964	12) 048	208	2,735	22) 097	2,305	19,809
3) 017	2,182	22,499	13) 049	78	805	23) 101	292	3,064
4) 021	270	6,664	14) 050	5,096	33,385	24) 102	9,253	100,736
5) 024	10	81	15) 059	1,109	4,499	25) 106	108	2,666
6) 028	2,504	7,196	16) 072	581	4,511	26) 107	2,771	26,066
7) 029	660	9,350	17) 079	2,351	7,242	27) 109	9	22,091
8) 033	1,842	18,222	18) 084	16	1,200	28) 113	387	8,674
9) 035	80	1,289	19) 087	11	287	29) 115	396	2,735
10) 039	188	1,465	20) 088	817	10,303	30)		

11. Project examples, Last 5 Years

Profile Code	"P," "C," "JV," or "IE"	Project Name and Location	Owner Name and Address	Cost of Work (in thousands)	Completion Date (Actual)
104, 107, 111, 114, 117	P	¹ Professional Engineering Services/City Engineer New Port Richey, FL	City of New Port Richey 5919 Main Street, New Port Richey, FL 34652	Ongoing	Ongoing
046, 102, 111	P	² General Land and Engineering Surveying and Underground Surveys for Miami-Dade Aviation Department Miami FL	Miami-Dade Aviation Department 4200 NW 36 th St, Miami, FL 33166	\$71k	Ongoing
050, 079	P	³ Residential Site Development, Cleveland St. Clearwater, FL	Clearwater FL Holdings LLC 211 Blvd of the Americas – Suite 113, Lakewood, NJ 08701	\$124	2025
088, 097, 106	P	⁴ Rocky Creek Playground Improvements Miami, FL	Miami-Dade County (Client Rep.) Curtis + Rogers Design Studio 7520 S. Red Road, Suite M, South Miami, FL 33143	\$75k	2022
046, 011, 102	P	⁵ Districtwide Right-of-Way (ROW) Mapping Consultant, FDOT District 6 Miami, FL	FDOT District 6 1000 NW 111 Avenue, Miami, FL 33172	\$1,000k	Ongoing
		⁶			
		⁷			

		8			
		9			
		10			
		11			
		12			
		13			
		14			
		15			
		16			
		17			
		18			
		19			

STANDARD FORM 254 PAGE 6 (REV. 11-92)

	20		
	21		
	22		
	23		
	24		
	25		
	26		
	27		
	28		
	29		
	30		

12. The foregoing is a statement of facts

Paul M. Sterbenz

Typed Name and Title: **Paul M. Sterbenz, PE**

Date:
4/29/26

Standard Form 255

STANDARD FORM (SF) 255 Architect-Engineer and Related Services Questionnaire for	1. Project Name/Location for which Firm is Filing: Cutler Cay Community Development District: District Engineer Qualifications	2a. Commerce Business Daily Announcement Date, if any: N/A	2b. Agency Identification Number, if any: N/A
3. Firm (or Joint-Venture) Name & Address Colliers Engineering & Design, Inc. 7400 Corporate Center Dr, Ste C, Miami, FL 33126		3a. Name, Title & Telephone Number of Principal to Contact Paul M. Sterbenz, PE 908.507.7353	
		3b. Address of office to perform work, if different from Item 3 N/A	
4. Personnel by Discipline: (List each person only once, by primary function.) Enter proposed consultant personnel <u>to be utilized</u> on this project on line (A) and in-house personnel on line (B).			
(A) <u>4</u> (B) <u>577</u> Administrative (A) <u> </u> (B) <u>21</u> Architects (A) <u> </u> (B) <u> </u> Chemical Engineers (A) <u>4</u> (B) <u>471</u> Civil Engineers (A) <u>4</u> (B) <u>109</u> Construction Inspectors (A) <u> </u> (B) <u> </u> Draftsmen (A) <u> </u> (B) <u>1</u> Ecologists (A) <u> </u> (B) <u> </u> Economists	(A) <u> </u> (B) <u> </u> Electrical Engineers (A) <u> </u> (B) <u> </u> Estimators (A) <u> </u> (B) <u>9</u> Geologists (A) <u> </u> (B) <u> </u> Hydrologists (A) <u> </u> (B) <u>5</u> Interior Designers (A) <u> </u> (B) <u>15</u> Landscape Architects (A) <u> </u> (B) <u> </u> Mechanical Engineers (A) <u> </u> (B) <u> </u> Mining Engineers	(A) <u> </u> (B) <u> </u> Oceanographers (A) <u> </u> (B) <u>7</u> Planners: Urban/Regional (A) <u> </u> (B) <u> </u> Sanitary Engineers (A) <u> </u> (B) <u> </u> Soils Engineers (A) <u> </u> (B) <u> </u> Specification Writers (A) <u> </u> (B) <u>34</u> Structural Engineers (A) <u> </u> (B) <u> </u> Surveyors (A) <u> </u> (B) <u> </u> Transportation Engineers	(A) <u>6</u> (B) <u>456</u> (A) <u>2</u> (B) <u>207</u> (A) <u>7</u> (B) <u>125</u> (A) <u>9</u> (B) <u>288</u> (A) <u>18</u> (B) <u>85</u> (A) <u> </u> (B) <u>275</u> Other (A) <u> </u> (B) <u>2737</u> Total Personnel
5. If submittal is by JOINT-VENTURE list participating firms and outline specific areas of responsibility (including administrative, technical and financial) for each firm: (Attach SF 254 for each if not on file with Procuring Office.) N/A for CED.			
5a. Has this Joint-Venture previously worked together? <input type="checkbox"/> Yes <input type="checkbox"/> No			

6. If respondent is not a joint-venture, list outside key Consultants/Associates anticipated for this project (Attach SF 254 for Consultants/Associates listed, if not already on file with the Contracting Office).

Name & Address	Specialty	Worked with Prime before (Yes or No)
1) N/A for CED.		
2)		
3)		
4)		
5)		
6)		
7)		
8)		

7. Brief resume of key persons, specialists, and individual consultants anticipated for this project.	
a. Name & Title: Paul Sterbenz, PE Senior Principal, Governmental Services Operating Officer	a. Name & Title: Eugene Collings-Bonfill, PE, PSM Civil Engineering Department Manager
b. Project Assignment: Principal-In-Charge	b. Project Assignment: District Engineer
c. Name of Firm with which associated: Colliers Engineering & Design, Inc.	c. Name of Firm with which associated: Colliers Engineering & Design, Inc.
d. Years experience: With this Firm <u>38</u> With Other Firms <u>5</u>	d. Years experience: With this Firm <u>1</u> With Other Firms <u>28</u>
e. Education: Degree(s)/Year/Specialization BS Civil Engineering, 1983	e. Education: Degree(s)/Year/Specialization MBA, 2022 MS, Civil Engineering, 2013 BS Civil Engineering, 2011
f. Active Registration: Year First Registered/Discipline Professional Engineer (PE), 1987	f. Active Registration: Year First Registered/Discipline Professional Engineer (PE): 2015 Professional Survey and Mapper (PSM): 2014
g. Other Experience and Qualifications relevant to the proposed project: Mr. Sterbenz has been providing municipal and civil engineering services for more than 40 years on public and private sector projects including projects for municipalities and counties. He has been accountable for the management of municipal projects from concept design through construction as well as the review aspect of plans, reports, and other documents for developer sponsored projects submitted to Planning Boards and Zoning Boards of Adjustment. His longevity in several of the Municipalities that he represents is a testament to his dedication to customer service. His extensive knowledge of and contacts with various review agencies facilitates the timely issuance of permits. His municipal engineering experience includes the preparation of design plans, technical specifications, and cost estimates; the procurement of permits and approvals for projects; and construction observation and administration services associated with municipal infrastructure projects. Mr. Sterbenz is also skilled in the design of park and recreation facilities, including athletic fields and tot lots; design of sanitary sewer collection and water distribution systems; traffic engineering; and environmental permitting.	g. Other Experience and Qualifications relevant to the proposed project: Mr. Collings-Bonfill brings over 28 years of diverse and in-depth experience in the engineering and construction industry. His professional background includes a strong foundation in land surveying, engineering design, geotechnical coordination, program and project management, and construction oversight, particularly for public-sector infrastructure projects. He has successfully led multidisciplinary teams on complex, high-profile projects for municipalities and government agencies, demonstrating a keen ability to manage schedules, budgets, regulatory compliance, and stakeholder communication. His familiarity with South Florida's regulatory environment and site-specific challenges positions him to deliver practical, data-driven solutions tailored to the region's unique conditions. In addition to his professional background, Mr. Collings-Bonfill currently serves as Chair of a Community Development District Board, offering a unique perspective on the responsibilities, expectations, and decision-making processes of District Supervisors. This experience allows him to approach the District Engineer role not only as a technical professional, but as a strategic advisor who understands the importance of balancing infrastructure needs with fiscal responsibility and community expectations. Mr. Collings-Bonfill's connection to the Cutler Cay community through family residents within Cutler Cay, along with his professional relationship with the District's management team, further strengthens CEDs' ability to provide attentive, locally informed service. The CED team is committed to delivering clear technical guidance, proactive planning, and collaborative support that advances the District's long-term infrastructure and operational objectives.

7. Brief resume of key persons, specialists, and individual consultants anticipated for this project.	
a. Name & Title: Miguel Lockward, PE, PMP, ENV SP Civil/Site Senior Project Manager	a. Name & Title:
b. Project Assignment: Civil Engineering Lead	b. Project Assignment:
c. Name of Firm with which associated: Colliers Engineering & Design, Inc.	c. Name of Firm with which associated:
d. Years experience: With this Firm <u>1</u> With Other Firms <u>15</u>	d. Years experience: With this Firm _____ With Other Firms _____
e. Education: Degree(s)/Year/Specialization BS Civil Engineering, 2014	e. Education: Degree(s)/Year/Specialization
f. Active Registration: Year First Registered/Discipline Professional Engineer (PE): 2019	f. Active Registration: Year First Registered/Discipline
g. Other Experience and Qualifications relevant to the proposed project: Mr. Lockward has 15 years of diverse experience in engineering design and construction management, including practice in both the Dominican Republic and the United States. Areas of expertise include stormwater management systems, water distribution, sanitary sewer collection and pump station design, land development, transportation, work zone traffic control, construction inspections, and utility coordination. He has proven ability to lead projects involving budgeting, cost control, quality assurance, bidding, and permitting. A background that combines military discipline, hands-on technical knowledge, and academic training from a competitive institution reflects a strong commitment to excellence, adaptability, and success as a collaborative team member in fast-paced, high-stakes environments.	g. Other Experience and Qualifications relevant to the proposed project:

8. Work by firms or joint-venture members which best illustrates current qualifications relevant to this project (list not more than 10 projects).					
a. Project Name & Location	b. Nature of Firm's Responsibility	c. Project Owner's Name& Address and Project Manager's Name & Phone Number	d. Completion Date (actual or estimated)	e. Estimated Cost (in Thousands)	
				Entire Project	Work for Which Firm Was/Is Responsible
(1) Professional Engineering Services/City Engineer New Port Richey, FL	EOR	City of New Port Richey, 5919 Main Street, New Port Richey, FL 34652 Dale Hall, 727.853.1047	2024-Ongoing	N/A	Ongoing
(2) Stormwater Management Services City of North Port, FL	Civil Engineering, Water Wastewater, Government Services	City of North Port, 4970 City Hall Boulevard, North Port, FL 34286 Anthony Friedman, 941.240.8098	2025-Ongoing	N/A	10k
(3) General Land and Engineering Surveying and Underground Surveys for Miami-Dade Aviation Department Miami, FL	SUE, GPR, Survey Services, Utility Coordination	Miami-Dade Aviation Department 4200 NW 36th St, Miami, FL 33166-2700 Victor Mendez, 305.876.0779	2025-Ongoing	N/A	71k
(4)					
(5)					
(6)					
(7)					
(8)					
(9)					
(10)					

9. All work by firms or joint-venture members currently being performed directly for Federal agencies.					
Cols. NOT divided like item 8 a. Project Name & Location	b. Nature of Firm's Responsibility	c. Agency (Responsible Office) Name and Address and Project Manager's Name & Phone Number	d. Percent Complete	e. Estimated Cost (in Thousands)	
				Entire Project	Work for Which Firm Is Responsible
N/A for					

10. Use this space to provide any additional information or description of resources (including any computer design capabilities) supporting your firm's qualifications for the proposed project

N/A

11. The foregoing is a statement of facts.

Signature: 

Paul M. Sterbenz, PE, Senior
Principal
Typed Name and Title: _____

Date:
4/29/26

Tab 5

Client References



Client References

References

CED has multiple contracts providing professional engineering and consulting services on numerous projects for municipalities throughout the state, and will leverage this experience to help manage and execute this contract successfully for the District. CED prides itself on its long-standing relationships that enable candid and concise communication at every level of government. Our licensed Professional Engineers, Surveyors, and technical staff can provide any aspect of design services that the District may need.

Client References	
Client Contact	Project/Contract
City of New Port Richey Dale Hall P: 727.853.1047 E: HallD@CityofNewPortRichey.org	Professional Engineering Services/ City Engineer
City of North Port Anthony Friedman P: 941.240.8098 E: afriedman@northportfl.gov	Stormwater Management Services
Miami-Dade County Aviation Department Victor Mendez P: 305.876.0779 E: vmendez@flyMIA.com	General Land and Engineering Surveying and Underground Surveys for Miami-Dade County Aviation Department





Project Details

Client

City of New Port Richey,
5919 Main Street
New Port Richey, FL 34652

Contact

Dale Hall
P: 727.853.1047
E: HallD@
CityofNewPortRichey.org

Date

2024-Ongoing

Cost

Ongoing

Services | Relevancy

Plans Review, Attending
Meetings, Permitting, EOR

Professional Engineering Services/City Engineer

New Port Richey, FL

CED is serving as the City Engineer for the City of New Port Richey, a critical role that encompasses a wide range of responsibilities aimed at ensuring the city's infrastructure is well-designed, functional, and sustainable. In this capacity, CED is responsible for the comprehensive design of capital projects, which includes overseeing large-scale public works such as new roadways, bridges, public buildings, and other essential infrastructure. These projects play a vital role in the city's growth and modernization and must be completed in compliance with local, state, and federal regulations, as well as within budget and on time.

In addition to capital projects, CED is providing expert advice and consultation on the maintenance and operation of the City's utilities, including water, sewer, and other vital systems. This will ensure that utilities function smoothly, meet the demands of the city's residents, and are maintained in a cost-effective and sustainable manner. CED as City Engineer is also playing a pivotal role in stormwater infrastructure management, addressing the design and upkeep of systems that control stormwater runoff, prevent flooding, and reduce water pollution - critical concerns in an area that may face heavy rainfall and potential flooding. Another key responsibility of CED is overseeing the City's transportation systems, including the design, maintenance, and improvement of roads, traffic signals, pedestrian pathways, and other infrastructure essential for safe and efficient mobility. This involves planning and implementing improvements to alleviate congestion, enhance accessibility, and ensure the transportation network supports the City's current and future needs.



Project Details

Client

City of North Port,
4970 City Hall Boulevard
North Port, FL 34286

Contact

Anthony Friedman
P: 941.240.8098
E: afriedman@northportfl.gov

Date

2025-Ongoing

Cost

10k (Ongoing)

Services | Relevancy

Civil Engineering, Water
Wastewater, Government
Services

Stormwater Management Services

City of North Port, FL

Under this contract CED has assisted the City by review site plans, subdivision plans, storm water reports and calculations, and other documents submitted by developers in support of development projects to assess compliance with applicable regulations including the City's Unified Land Development Code (ULDC) in accordance with a task order issued under a continuing services agreement with the City of North Port. Upon completion of the document review, prepare and issue a report to the City on the storm designs for development applications.



Project Details

Client

Miami-Dade Aviation
Department
4200 NW 36th St
Miami, FL 33166-2700

Contact

Victor Mendez
P: 305.876.0779
E: vmendez@flyMIA.com

Date

2025-Ongoing

Cost

71K

Services | Relevancy

Sub-Surface Utility
Verification, Ground
Penetrating Radar (GPR),
General Land Surveying
Services (Topographic,
Horizontal, and Vertical
Control), and Existing
Utility Coordinators and
Field Verification

General Land and Engineering Surveying and Underground Surveys for Miami-Dade Aviation Department

Miami, FL

Since 2019, CED has supported the county for any miscellaneous professional engineering & surveying services. Multiple assignments have supported the Miami Aviation Department and resulting in 7+ subsequent task orders of the same nature. The TWO scopes have included full topographic survey, Horizontal and vertical control, drainage survey, Nondestructive Sub-Surface Utility Verification and Ground Penetrating Radar (GPR).

Our surveying services typically begin with researching the public records for existing primary control network for the projects. Our services have consisted of establishing the project's horizontal/vertical controls, leveraging static LiDAR scanning of some gates areas for MIA Airport to ensure detailed digital terrain mapping for the design of new grease traps, cost efficiencies, and overall safety. This data is combined with conventional topographic information of the locations of existing improvements including the drainage and sanitary structures and utilities within the project limits.

A close-up photograph of two business professionals shaking hands over a desk. The person on the left is wearing a dark blue suit jacket, and the person on the right is wearing a grey and white plaid suit jacket. On the desk, there are several documents on clipboards, a pen, and a laptop. The background is a blurred office setting with a window.

Tab 6

Insurance

Tab 7

Business Ethics



Business Ethics

Business Ethics

Per Notice of Request for Qualifications, "Disclose (i) any circumstance whereby the professional conduct of your firm or any of its engineers is currently being investigated judicially or by an administrative agency or qualification board and (ii) any prior adverse decision or settlement relating to a violation of ethical standards by your firm or one of its engineers, if any."

This section is N/A for CED.



Tab 8

Additional Information

Additional Information

Minority Business Enterprise

CED is not a Minority Business Enterprise.



Colliers Engineering & Design is a leading, multi-discipline engineering and architecture, design and consulting firm servicing public and private sector clients nationwide.

For a full listing of our office locations, please visit colliersengineering.com

1 877 627 3772



Engineers • Architects • Planners • Surveyors • Inspectors • Interior Designers
Landscape Architects • Environmental Scientists • Project Managers